



ARIA   
RESIDENCES  
— • —  
AIRPORT RESIDENTIAL AREA









Images displayed are for illustrative purposes

## WELCOME HOME TO ARIA RESIDENCES

About Aria Residences

Architecture & Design

Features & Facilities



## A PIECE OF THE CITY

Location

Studio Apartments

1-Bedroom Apartments

2-Bedroom Apartments



## FINANCING YOUR DREAM HOME

Payment plan





ARIA  
RESIDENCES





# WELCOME HOME TO ARIA RESIDENCES

---

About Aria Residences  
Architecture & Design  
Features & Facilities

# *Revel in the comfort of Aria*

Aria Residences is a six-level apartment complex located in the upscale Airport Residential Area in Accra.

The building consists of studio, 1-bedroom and 2-bedroom apartments that offer a competitive price-to-space ratio, high-value return to buyers and investors, and the most ideal living experience for residents.

# *Eco-friendly Design*

At the core of the building's design concept is energy efficiency and the provision of ecologically-friendly spaces. Every apartment floor has a central circulation corridor that overlooks the green courtyard below and allows for natural daylight.





Our recreational rooftop on the top-most floor crowns the building with an urban oasis comprising of a swimming pool, fully equipped gym, bar and green lounge, offering the perfect environment for you and your family to unwind and relax while enjoying a beautiful view of the city.



- KEY**
- Studio (30m<sup>2</sup>)
  - One-bedroom Type A (47m<sup>2</sup>)
  - One-bedroom Type B (78m<sup>2</sup>)
  - Two-bedroom Type A (115m<sup>2</sup>)
  - Two-bedroom Type B (120m<sup>2</sup>)
  - Two-bedroom Type C (125m<sup>2</sup>)

**ROOFTOP**

- Gym
- Swimming Pool
- Lounge

**1st - 5th FLOORS**

Apartments

**GROUND FLOOR**

- Reception Area
- Atrium Garden
- Parking Area
- Management Offices



# FEATURES



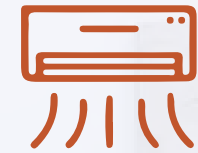
Atrium Garden



Child-friendly Rooftop pool & Lounge



Well-equipped Gym



Natural light & Well-ventilated units



Backup power Generators



Spacious Parking



Fully-fitted Kitchens



24-hour CCTV Surveillance & security



Concierge & Visitor Management Service



Kitchen Pantry



Fully-fitted Bathrooms





# A PIECE OF THE CITY

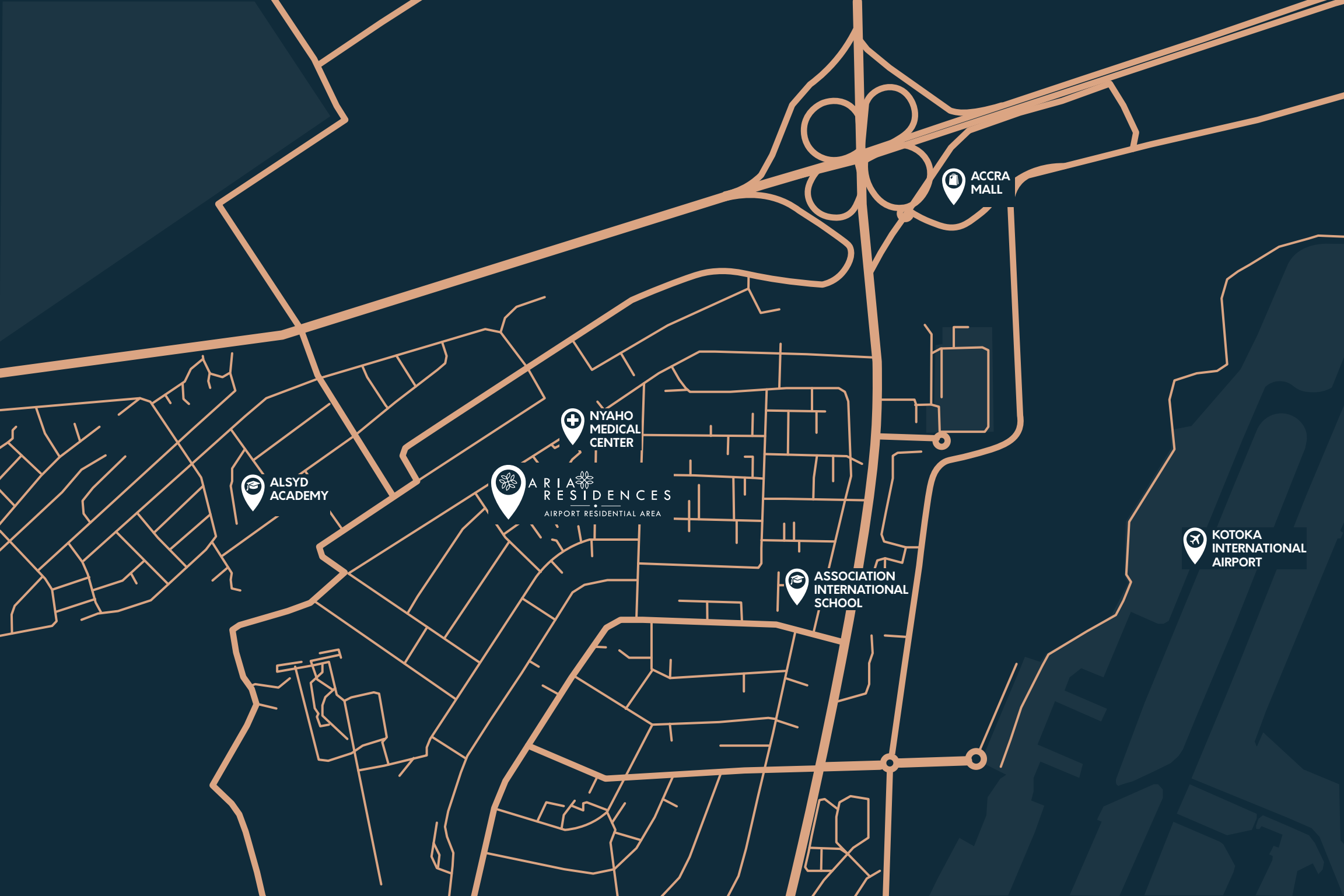
---

Location

Studio Apartments

1 - Bedroom Apartments

2 - Bedroom Apartments



## WHAT'S NEARBY

|                         |        |
|-------------------------|--------|
| Nyaho Medical Center    | 1 min  |
| Association Int. School | 5 min  |
| Max Mart Supermarket    | 5 min  |
| Alsyd Academy           | 10 min |
| Kotoka Int. Airport     | 10 min |
| Accra Mall              | 15 min |
| 37 Military Hospital    | 15 min |



# STUDIO APARTMENTS

ARIA  
RESIDENCES



# STUDIO

TOTAL FLOOR AREA

**30m<sup>2</sup>**

## FEATURES

- Open plan floor space
- Bathroom
- 1 Balcony



**GHS 1,187,500**





A modern, minimalist apartment interior featuring a white countertop, three white pendant lights, and a white wall. The scene is brightly lit, with a warm glow from the lights. The text "1- BEDROOM APARTMENTS" is overlaid in a bold, orange font, underlined with a thin orange line and a small orange dot in the center.

## 1- BEDROOM APARTMENTS

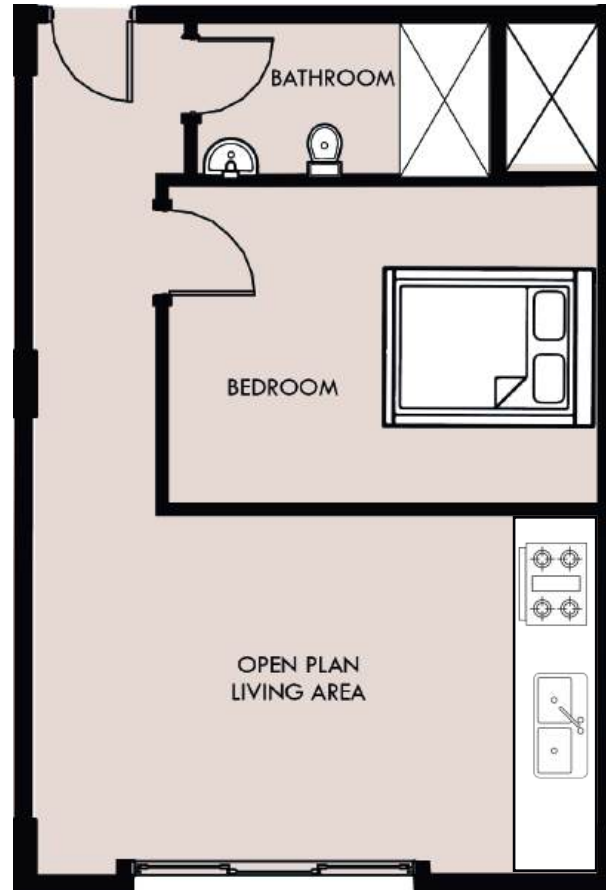
## TYPE A

TOTAL FLOOR AREA

**47m<sup>2</sup>**

### FEATURES

- Open plan Kitchen, Living & Dining
- Bedroom
- Bathroom
- 1 Balcony
- Hallway



**GHS 1,625,000**

**GHS 2,487,500**

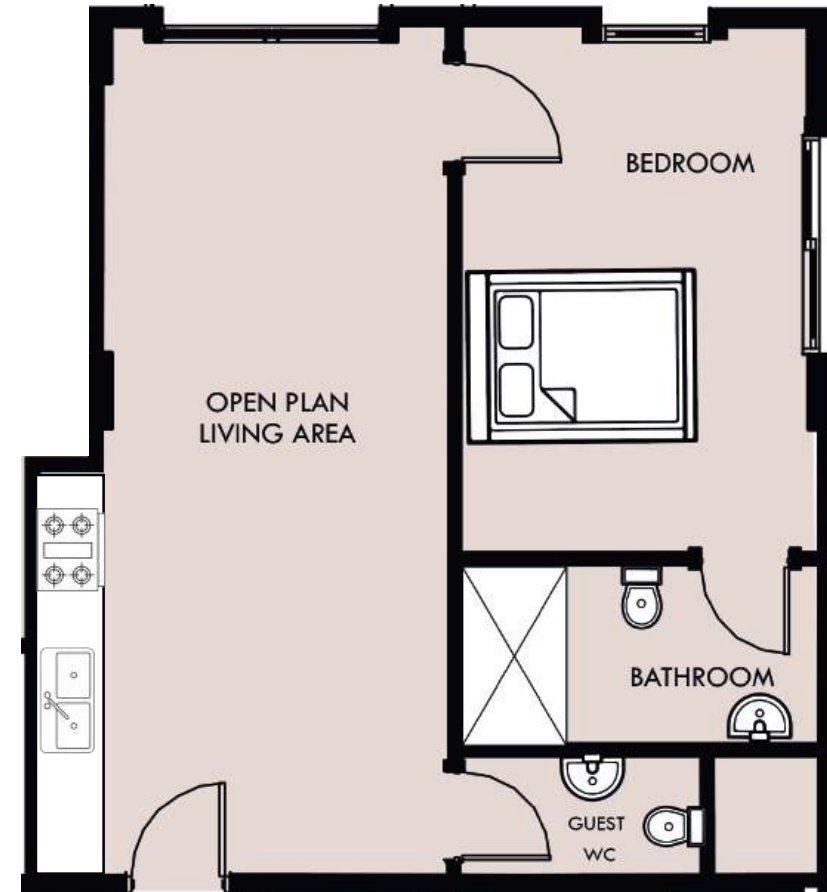
## TYPE B

TOTAL FLOOR AREA

**78m<sup>2</sup>**

### FEATURES

- Open plan Kitchen, Living & Dining
- 1 Ensuite Bedroom
- Guest WC
- 1 Balcony





A modern bedroom interior featuring a bed with a white headboard and a grey and white duvet. The room includes two wooden nightstands with plants, a white armchair, and a window with blue curtains. The text "2- BEDROOM APARTMENTS" is overlaid in the center.

## 2- BEDROOM APARTMENTS

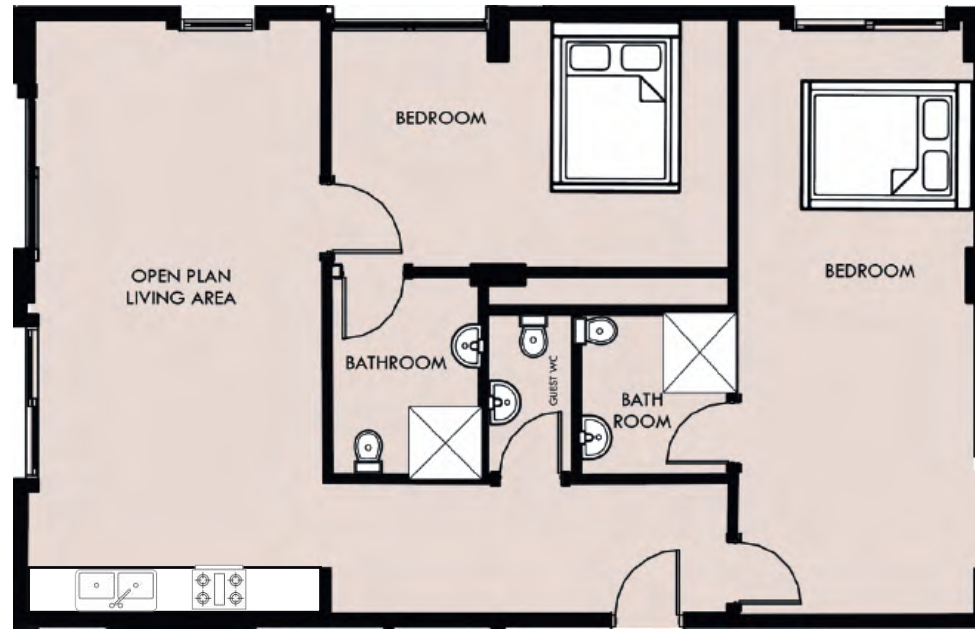
## TYPE A

TOTAL FLOOR AREA

**115m<sup>2</sup>**

### FEATURES

- Open plan Kitchen, Living & Dining
- 2 Ensuite Bedrooms
- Guest WC
- 2 Balconies
- Pantry/ Storage



**GHS 3,737,500**

**GHS 3,987,500**

## TYPE B

TOTAL FLOOR AREA

**120m<sup>2</sup>**

### FEATURES

- Open plan Kitchen, Living & Dining
- 2 Ensuite Bedrooms
- Guest WC
- 2 Balconies
- Pantry/ Storage





## TYPE C

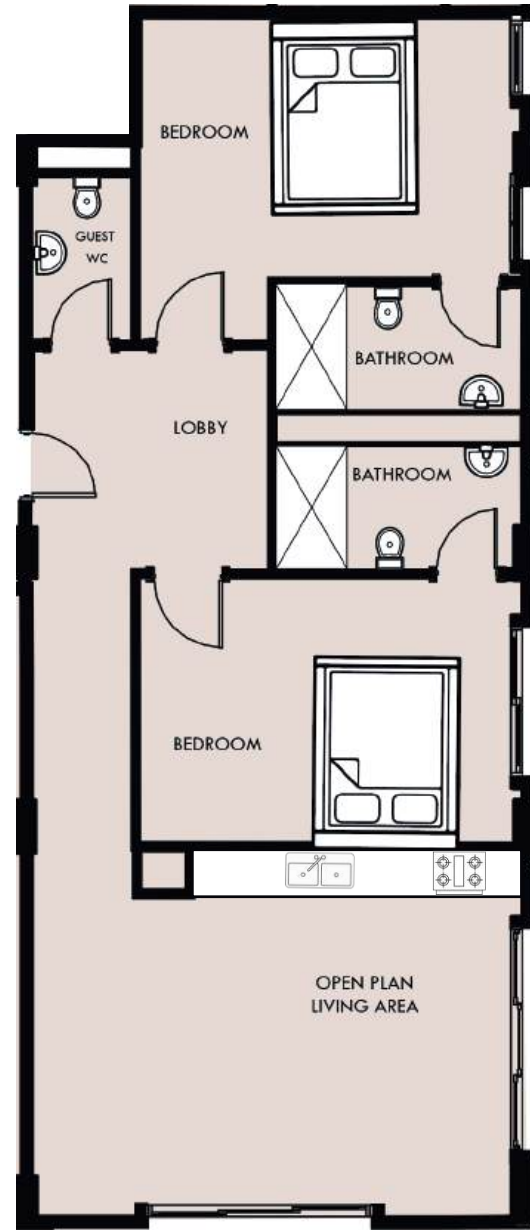
GHS 4,362,500

TOTAL FLOOR AREA

**125m<sup>2</sup>**

### FEATURES

- Open plan Kitchen, Living & Dining
- 2 Ensuite Bedrooms
- Guest WC
- 2 Balconies
- Pantry/ Storage



Images displayed are for illustrative purposes



# FINANCING YOUR DREAM HOME

---

Payment plan



## SCHEDULE YOUR PAYMENT

### 1<sup>st</sup> INSTALLMENT

**30%**

When agreement  
is signed

### 2<sup>nd</sup> INSTALLMENT

**25%**

Six months after day  
of purchase

### 3<sup>rd</sup> INSTALLMENT

**25%**

Twelve months after  
day of purchase

### 4<sup>th</sup> INSTALLMENT

**10%**

Eighteen months after  
day of purchase

### 5<sup>th</sup> INSTALLMENT

**10%**

Upon completion

\*Prices of units are subject to the prevailing USD to GHS exchange rate in index USD benchmark for each unit.



# BOOK A VIEWING WITH US

#8 Labone Arcade, Orphan Crescent,  
Labone, Accra- Ghana.

(+233) 050 044 3601

[contact@renovaiterealty.com](mailto:contact@renovaiterealty.com)

[www.renovaiterealty.com](http://www.renovaiterealty.com)





Images displayed are for illustrative purposes



