



almond house



Welcome to this stunning 5-bedroom house located in the vibrant Tse Addo neighborhood of Accra, Ghana. This spacious and well-designed home offers a perfect blend of modern living and comfort.

KEY FEATURES:

Four Bedrooms: The house boasts four generously-sized bedrooms, providing ample space for a growing family or those who enjoy extra room for guests or home offices.

Contemporary Design: With a modern architectural design, the house features sleek lines, large windows, and quality finishes that create a stylish and inviting atmosphere.

Open Plan Living: The open-plan layout seamlessly connects the living, dining, and kitchen areas, promoting a sense of spaciousness and making it an ideal space for entertaining.



Gourmet Kitchen: The kitchen is equipped with state-of-the-art appliances, ample storage, and a stylish design, making it a focal point for culinary enthusiasts.

Private Outdoor Space: Enjoy outdoor living with a private garden or patio area. Perfect for hosting gatherings or simply relaxing in the fresh air.

Master Suite Retreat: The master bedroom comes complete with an en-suite bathroom, providing a private and luxurious retreat within the home.

Secure and Convenient Location: Situated in the sought-after Tse Addo area, residents benefit from a secure and well-connected neighborhood, with easy access to amenities, schools, shopping, and more.

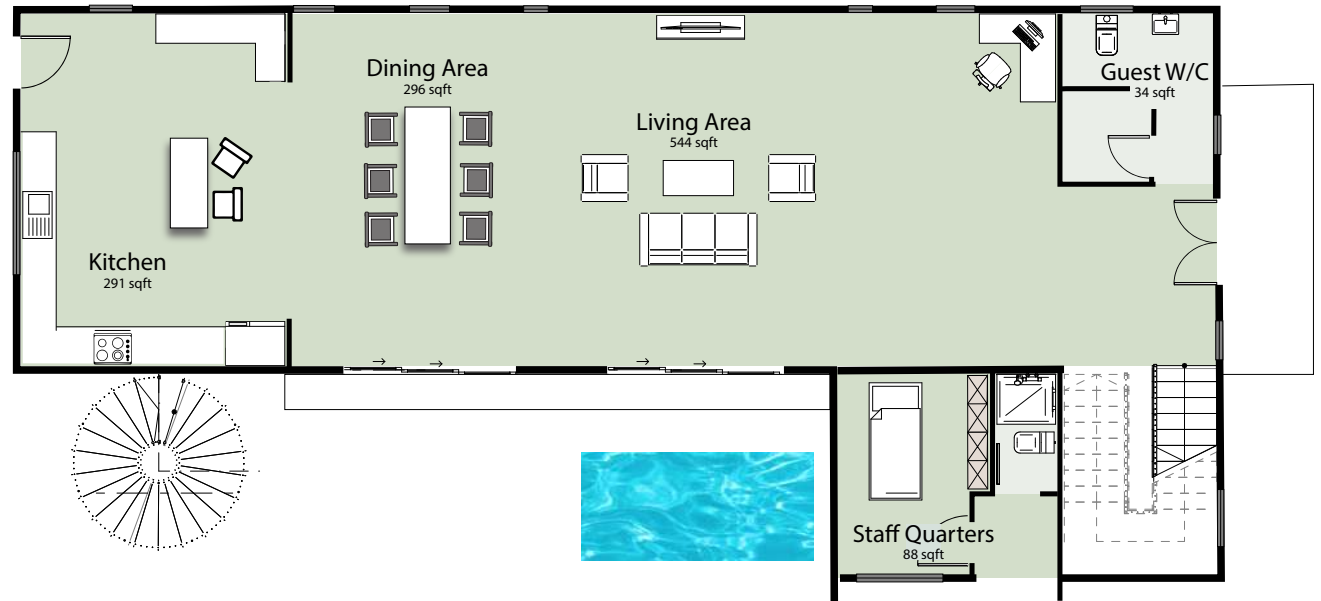
Parking Facilities: The property offers dedicated parking space, ensuring convenience for residents and their guests.





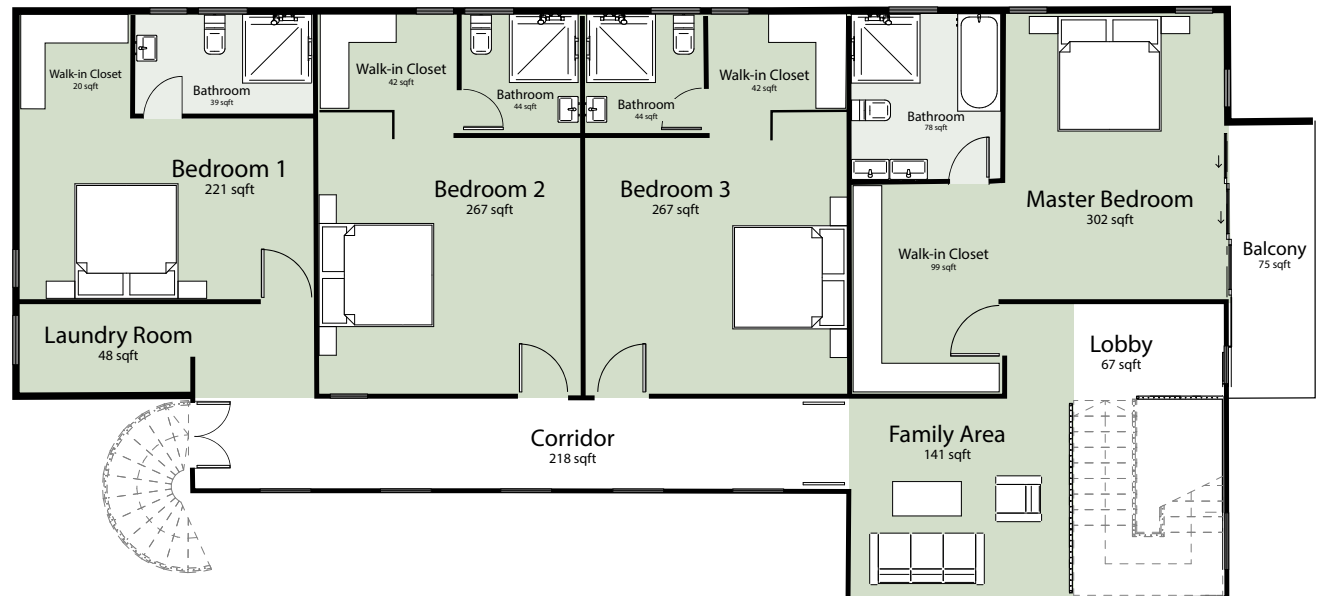
GROUND FLOOR

- Guest Washroom
- Open plan Living and Dining Area
- Staff Quarters (en-suite)
- Fully-fitted Kitchen with Island and Appliances
- Power Room
- Backyard Kitchen
- Garden/ Lawn
- Swimming Pool (optional)



FIRST FLOOR

- 4 Bedrooms (All ensuite and with walk-in closet)
- Family Area with Kitchenette
- Laundry Room



FEATURES

- Ducted Air Conditioning
- Bathroom and Hallway Skylight
- Concealed Cistern WC
- Rooftop Space
- Second staircase (spiral)
- CCTV and Intercom
- Hardwood/ Timber Doors
- Rainwater Storage Tank
- Standby Generator Connection
- Automated Sliding Gate
- Lift/ Elevator (optional)





LOCATION

KOTOKA INT. AIRPORT 11mins

37 MILITARY HOSPITAL 13 mins

LISTER HOSPITAL 14 mins

ACCRA MALL 15 mins

LABADI BEACH 4 mins

[CLICK HERE TO FIND YOUR WAY HOME](#)

PRICING

ALL-INCLUSIVE

\$550,000

PRICE WITH POOL ONLY

\$520,000

PRICE WITHOUT POOL & ELEVATOR

\$450,000

