



# STERLING AVENUE



Sterling Avenue is a townhouse development located in Tse Addo, Accra.

It consists of 10 fully-detached 4-bedroom homes, complete with a security post, and the option for a rooftop area, an additional bedroom and a swimming pool.

STARTING AT:

**\$ 365,000**



## AMENITIES



**FULLY-FITTED  
KITCHEN**



**FULLY-FITTED  
WARDROBE**



**SECURITY  
POST**



**SWIMMING POOL  
(OPTIONAL)**



**ROOFTOP AREA  
(OPTIONAL)**



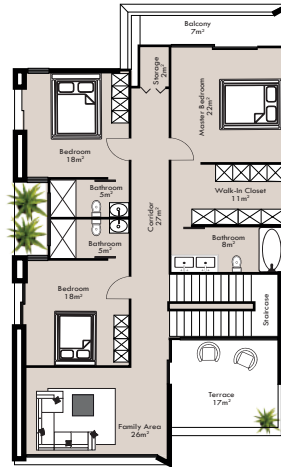
**24-HOUR CCTV  
SURVEILLANCE**

# OPTION A



Ground Floor/Site Plan

# FLOORPLANS



First Floor

# OPTION B

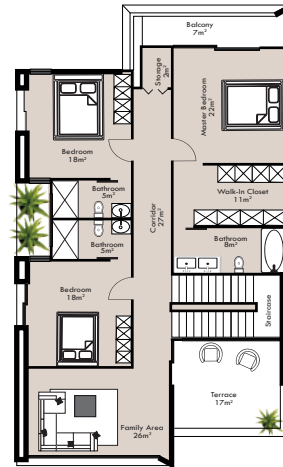
# FLOORPLANS



Ground Floor and Site Plan

+

Swimming Pool

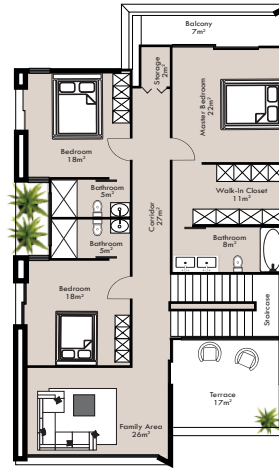


First Floor

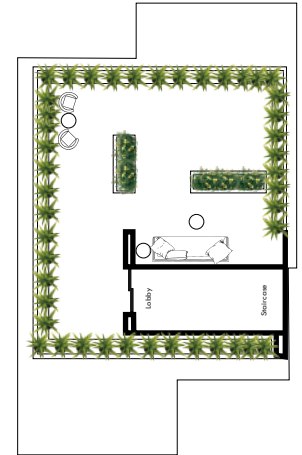
# OPTION C



Ground Floor/Site Plan



First Floor



Rooftop

+

Additional bedroom

# FLOORPLANS



# OPTION D

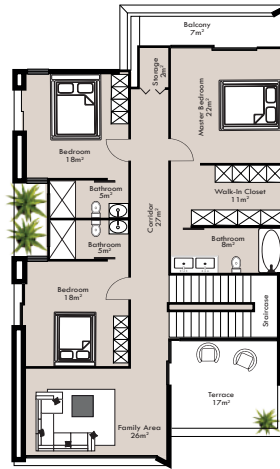


Ground Floor and Site Plan

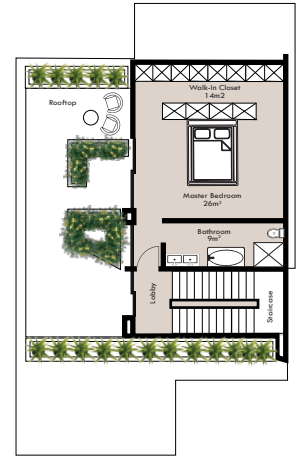
+

Swimming Pool

# FLOORPLANS



First Floor



Rooftop Area

+

Additional bedroom

## OPTION A

4 ensuite bedrooms  
(incl. a walk-in closet  
in the master bedroom)

Open plan Living  
and Dining Area.

Guest Washroom

Kitchen & Pantry

**\$ 365,000**

## OPTION B

4 ensuite bedrooms  
(incl. a walk-in closet  
in the master bedroom)

Open plan Living  
and Dining Area.

Guest Washroom

Kitchen & Pantry

+

Swimming Pool

**\$ 399,000**

## OPTION C

4 ensuite bedrooms  
(incl. a walk-in closet  
in the master bedroom)

Open plan Living  
and Dining Area.

Guest Washroom

Kitchen & Pantry

+

Rooftop Area

**\$ 399,000**

## OPTION D

4 ensuite bedrooms  
(incl. a walk-in closet  
in the master bedroom)

Open plan Living  
and Dining Area.

Guest Washroom

Kitchen & Pantry

+

Rooftop Area  
Swimming Pool  
Additional Bedroom  
on third / rooftop floor

**\$ 449,000**







*The ideal home brings you  
closer to everything you need*

<b>GHANA INT. TRADE FAIR CENTER</b>	1 MIN
<b>KOTOKA INTERNATIONAL AIRPORT</b>	11 MINS
<b>37 MILITARY HOSPITAL</b>	13 MINS
<b>LISTER HOSPITAL</b>	14 MINS
<b>ACCRA MALL</b>	15 MINS
<b>LABADI BEACH</b>	4 MINS



## PAYMENT PLAN

---

**1<sup>st</sup> INSTALLMENT**

**40%**

WHEN AGREEMENT IS SIGNED

**2<sup>nd</sup> INSTALLMENT**

**30%**

THREE MONTHS AFTER DAY  
OF PURCHASE

**3<sup>rd</sup> INSTALLMENT**

**20%**

SIX MONTHS AFTER DAY  
OF PURCHASE

**4<sup>th</sup> INSTALLMENT**

**10%**

UPON COMPLETION OF  
PROJECT

---

**RESERVE A UNIT WITH US**

**(+233) 50 044 3601**

**CONTACT@RENOVAITEREALTY.COM**  
**WWW.RENOVAITEREALTY.COM**



  
RENOVAITE  
REALTY