



THE MANOR

RESIDENCES

A modern townhouse with a dark frame and a white wall with the number 02. The house features a large, dark, rectangular frame that encloses a covered area. The walls are a mix of dark and light colors, with large windows and doors. The house is surrounded by lush greenery, including palm trees and other tropical plants. The sky is overcast. In the foreground, there is a white wall with the number 02 in a gold color. There are also some bushes and a red car parked in a garage area.

Welcome to The Manor

A contemporary townhouse located in the Tse Addo area in Accra. The property combines optimal land use and masterful design to utilise a 100x100 feet plot area, to put up three opulent 3-bedroom homes just minutes away from the Kotoka International Airport and the beautiful Accra shorelines.



“Home is where the heart is.”

— Get Cozy —

We believe that air flow circulation and effective use of daylight create living spaces with a feeling of comfort, warmth, and relaxation and reduces dependence on artificial lighting and cooling; our reason for using clear, openable windows throughout the design.



— Space All Around —

With a staff quarters, car port for 3 cars, a dip pool, and a fairly sized front yard where one can enjoy gatherings along with shared semi-detached security posts without compromising on room sizes on the ground floor.





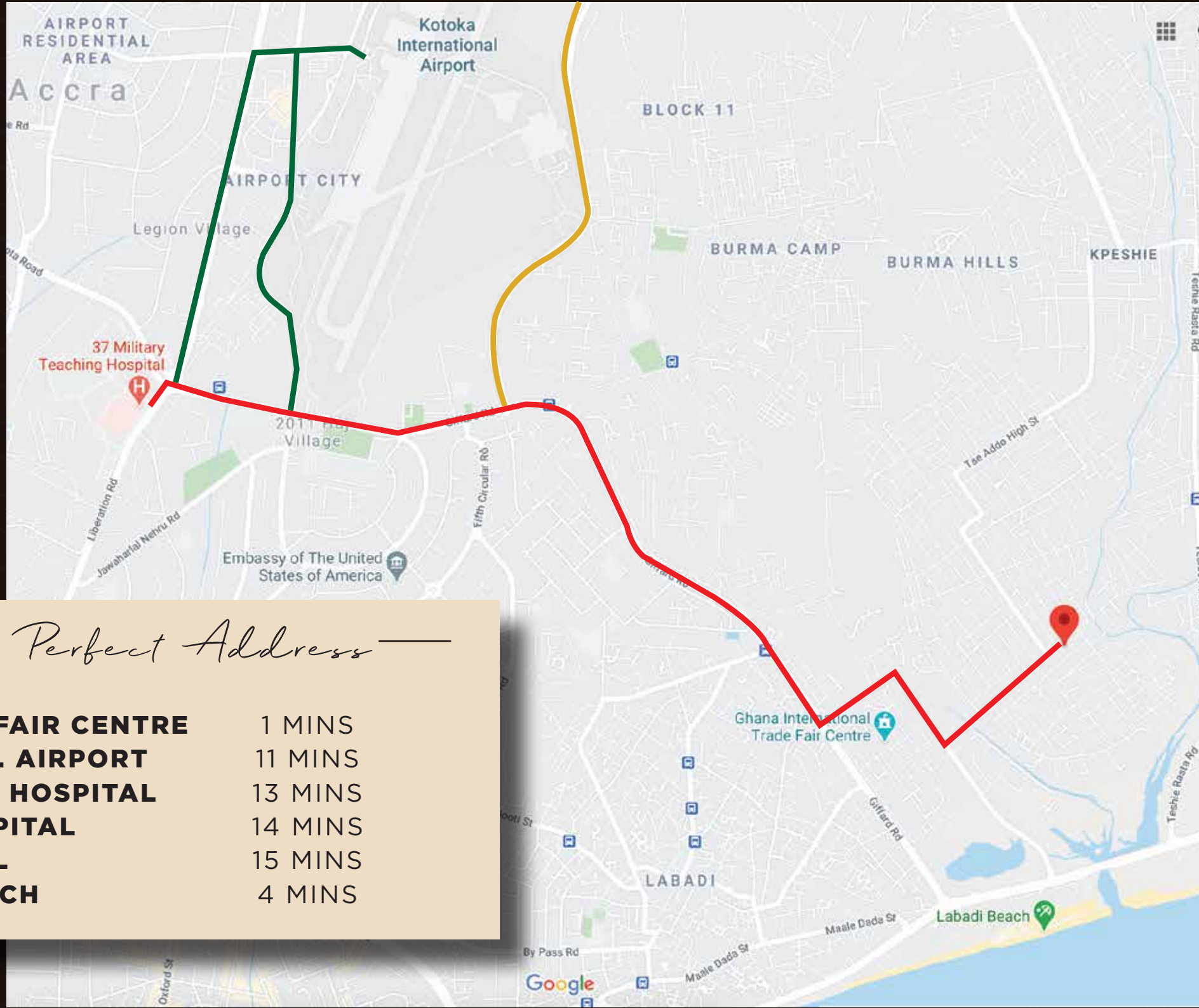
— *Enjoy Nature* —

The hollowed out balcony on the first floor and a planter adjacent the front terrace to allow small trees to grow through gives upper floors a share of greenery, a dip pool that flanks the house and provides a good opportunity to cool off on hot days, a spacious kitchen yard that enables outdoor cooking and relaxation, among others, create an increased sense of comfort and coziness.



— The Vicinity —

Tse Addo is a bustling, growing locale situated between Labadi and East Airport Hills. This neighbourhood is experiencing a boom in residential development due to the calm family setting in a central part of the city, which allows you easy access to main business district of the country. Families will benefit and enjoy of having several educational institutions - such as Soul Clinic, East Airport International School, Ghana Int. School (GIS), amongst others - and health facilities just a short drive away.



— The Perfect Address —

INT. TRADE FAIR CENTRE	1 MINS
KOTOKA INT. AIRPORT	11 MINS
37 MILITARY HOSPITAL	13 MINS
LISTER HOSPITAL	14 MINS
ACCRA MALL	15 MINS
LABADI BEACH	4 MINS



— *The Solars* | —

Up the stairs, the three en suite bedrooms, all boasting in-built wardrobes and study desks with a family area make up the first floor of the house.



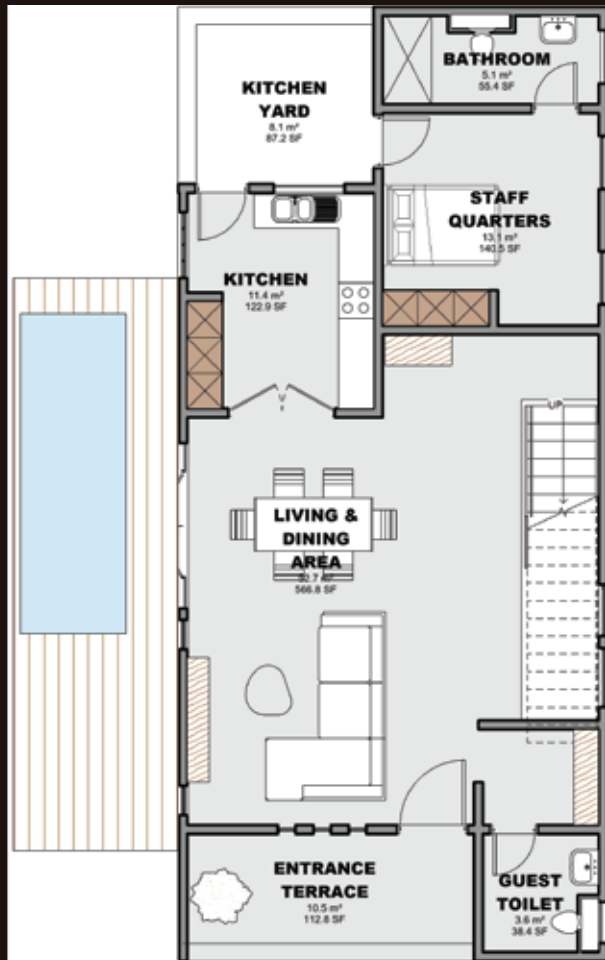


— *The Solars II* —

We believe that air flow circulation and effective use of daylight create living spaces with a feeling of comfort, warmth, and relaxation and reduces dependence on artificial lighting and cooling; our reason for using clear, openable windows throughout the design.



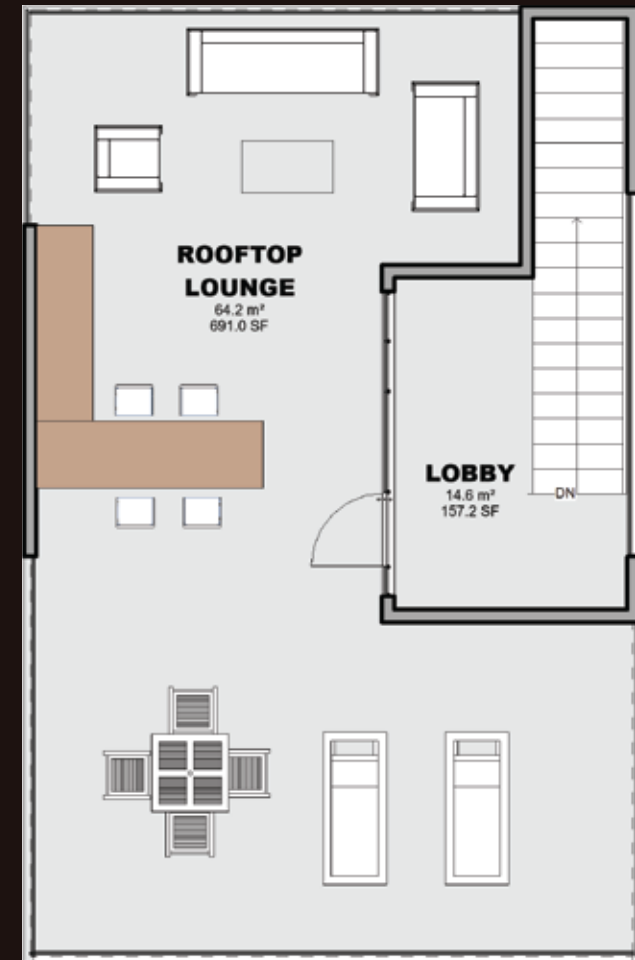
/Floor Plan/



Ground Floor



First Floor



Rooftop Lounge

/Price & Features/



3-Bedroom Detached

**Starting at
\$299,000**

Extra Features

- 24-HR CCTV Surveillance
- Standby Generator
- Solar Water Heaters
- Security Post
- Electric Wire Fencing
- Water Storage System

/Payment Schedule/

1 st Installment	2 nd Installment	3 rd Installment	4 th Installment
40%	30%	20%	10%
When Agreement is signed	Three Months after Day of Purchase	Six Months after Day of Purchase	Upon Completion of Project

NOTE: The detached townhouse will be completed for the client within twelve (12) months of first payment,

Let Us Show You Around.

TELEPHONE: **024 325 6739 / 050 488 3254**

EMAIL: **contact@renovaiterealty.com**

Developed by:

