



The Butler

TOWNHOMES

The Butler

A magnificent collection of six ultra-modern 3-bedroom townhomes located in the Tse Addo area in Accra. The property combines optimal land use and masterful design to utilise the plot area for the six majestic townhomes, minutes away from the Kotoka International Airport and the beautiful Accra shorelines.



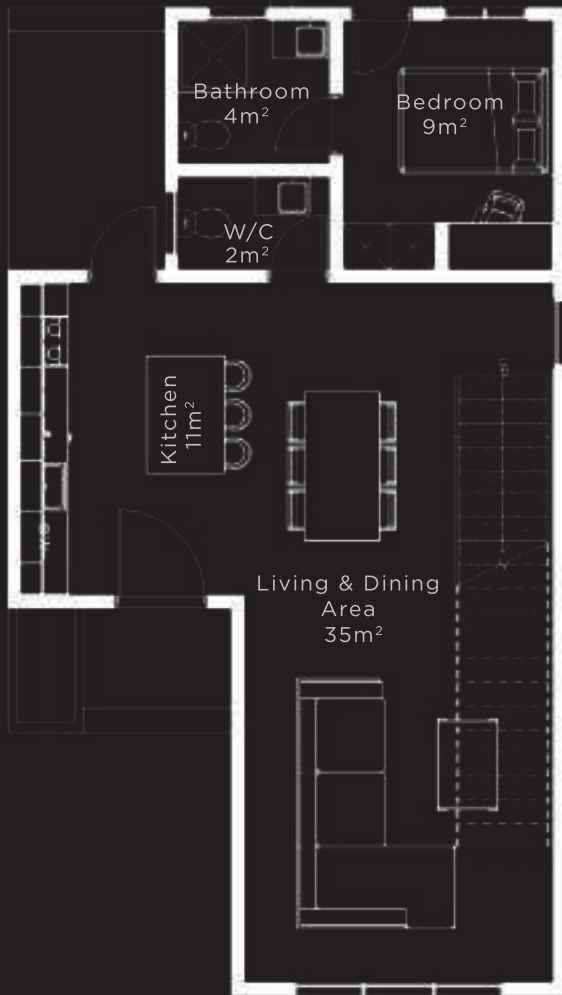




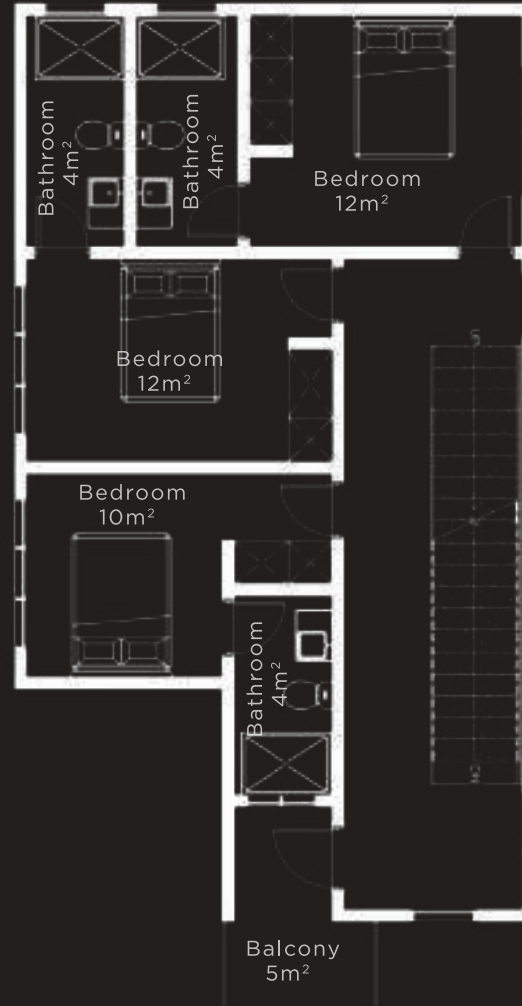
Our Locale

Tse Addo is a bustling, growing locale situated between Labadi and East Airport Hills. This neighbourhood is experiencing a boom in residential development due to the calm family setting in a central part of the city, which allows you easy access to the main business district of the country. Families will enjoy the benefit of having several educational institutions - such as Soul Clinic, East Airport International School, Ghana Int. School (GIS), amongst others - and health facilities just a short drive away.

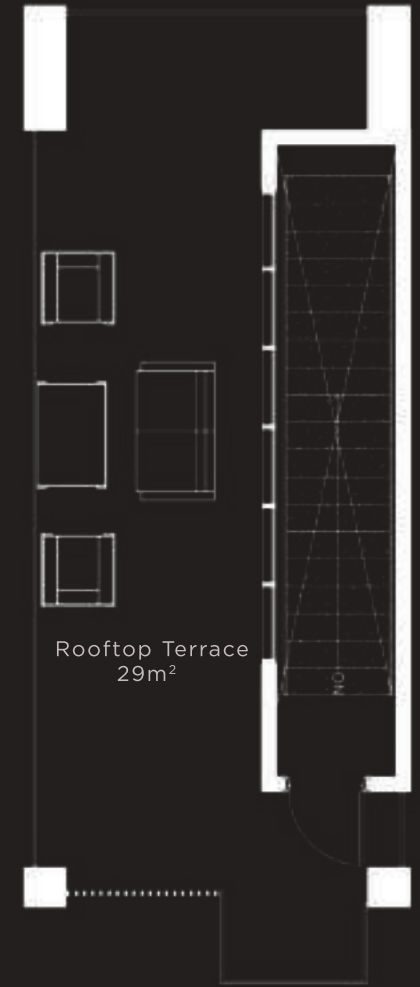
Ground Floor



First Floor



Second Floor



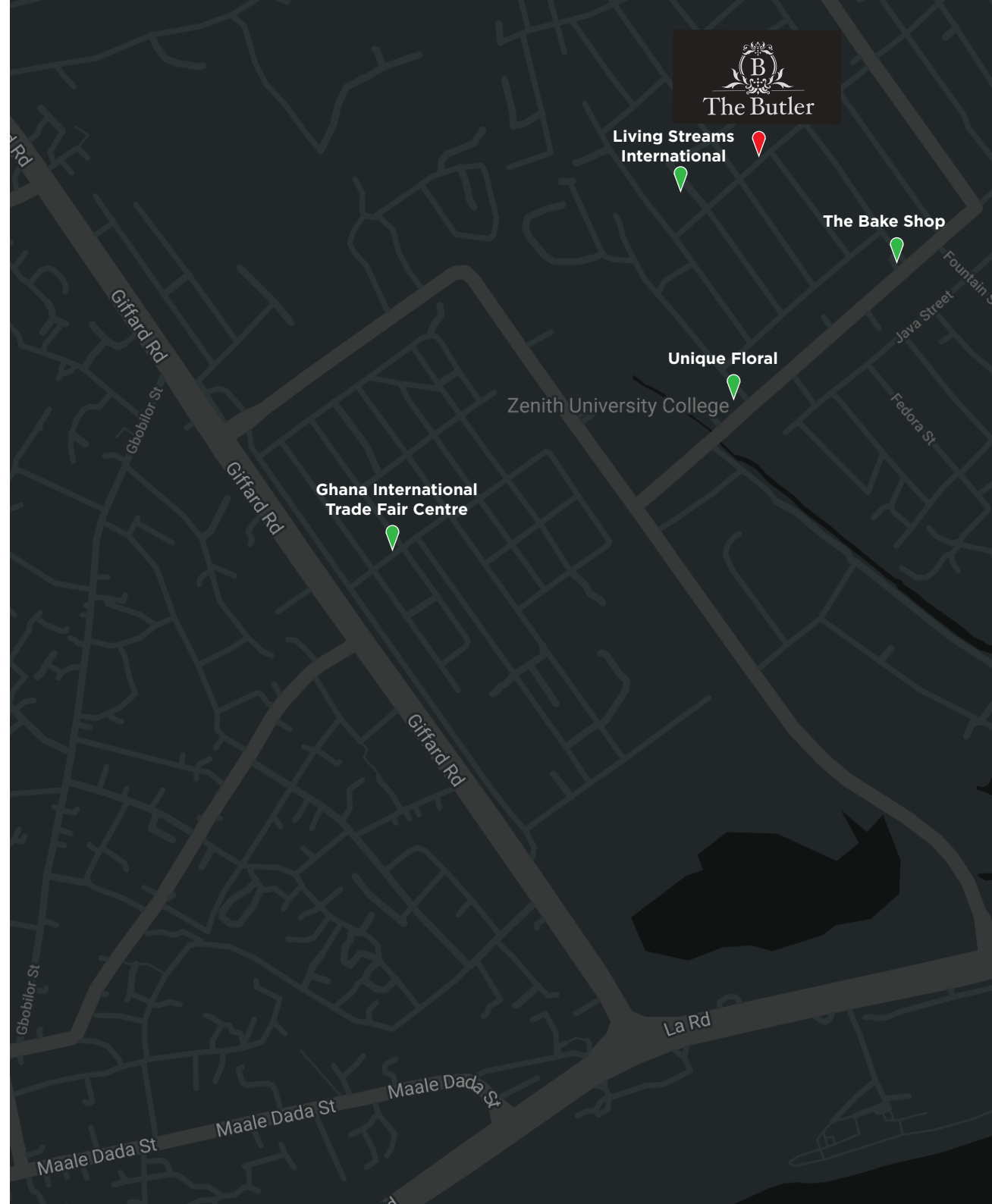
Starting at US\$239,999

1 st Installment	2 nd Installment	3 rd Installment	4 th Installment
40%	30%	20%	10%
When Agreement is signed	Three Months after Day of Purchase	Six Months after Day of Purchase	Upon Completion of Project

NOTE: The detached townhouse will be completed for the client within twelve (12) months of first payment,

*A neighbourhood that
keeps you connected to
the entire city.*

INT. TRADE FAIR CENTRE	1 MINS
KOTOKA INT. AIRPORT	11 MINS
37 MILITARY HOSPITAL	13 MINS
LISTER HOSPITAL	14 MINS
ACCRA MALL	15 MINS
LABADI BEACH	4 MINS





Enjoy the outdoor lifestyle with friends

With a fairly sized front yard where one can enjoy gatherings, a staff quarters, car ports, along with shared semi-detached security posts, without compromising on room sizes on the ground floor.





*Thoughtfully designed
to set the tone for
classy living*

Air flow circulation and effective use of daylight is vital in creating living spaces with a feeling of comfort, warmth, and relaxation. This reduces dependence on artificial lighting and cooling; our reason for using clear, openable windows throughout the design.



Luxury takes on a deeper meaning

Up the stairs, the three en suite bedrooms, all boasting in-built wardrobes and study desks with a family area make up the first floor of the house.



Modern take on opulent living

We believe that air flow circulation and effective use of daylight create living spaces with a feeling of comfort, warmth, and relaxation and reduces dependence on artificial lighting and cooling; our reason for using clear, openable windows throughout the design.



*World of
amenities at
your doorstep*

- Rooftop Lounge
- Staff Quarters
- 24-HR CCTV Surveillance
- Solar Water Heaters
- Security Post
- Electric Wire Fencing
- Water Storage System



*Let us show
you around.*

TELEPHONE:

030 277 4361 / 050 044 3601

EMAIL:

contact@renovaiterealty.com



